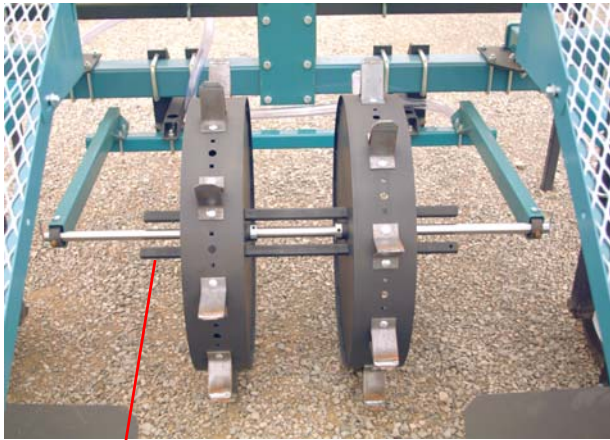
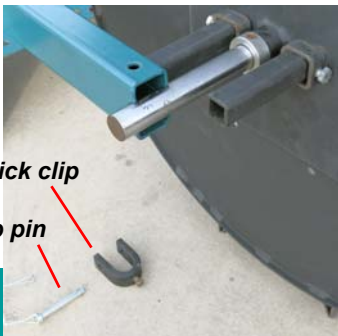


Water pipe

Shaft collars secure wheel position anywhere on stainless steel shaft



Timing bars securely align wheels for offset spacing. NO setscrews in wheel hub - NO SLIP

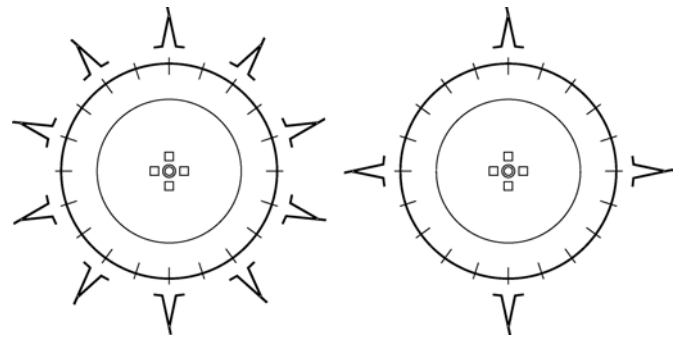


Quick clip
Snap pin

Quick clips remove in seconds to dismount wheel shaft. Loosen shaft collars to easily add or remove wheels

Water Wheels

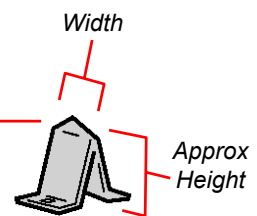
Water wheels are available with various patterns to install bolt-on plant punches. Plant spacing is available every 1-inch. By removing every-other punch - or more - other plant spacings are possible for other crops. 80 x 4 and 84 x 3-1/2 wheel sizes offer the best selection of spacings for most crops.



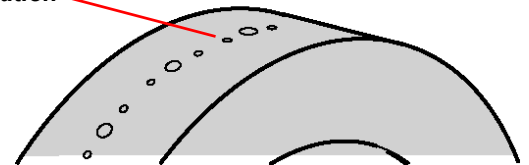
Near-precision plant spacing

In general, plant spacing accuracy is within a 1-inch range, but can still be slightly adjusted by changing punch size.

Pointed punches effectively pierce plastic and best pierce other materials



Secure punch installation



Plant Punches

Punch size can be more-or-less matched to plant cell size. But keep perspective - hole shape is heavily dependent on soil conditions and plant depth is ultimately set by hand. Feel free to use a different punch size to get the hole size wanted. The 2 x 3 punch is "standard" for most applications on medium-size wheel systems.